

Dell Precision R5500

Setup And Features Information

About Warnings

 **WARNING:** A WARNING indicates a potential for property damage, personal injury, or death.

Front And Back View

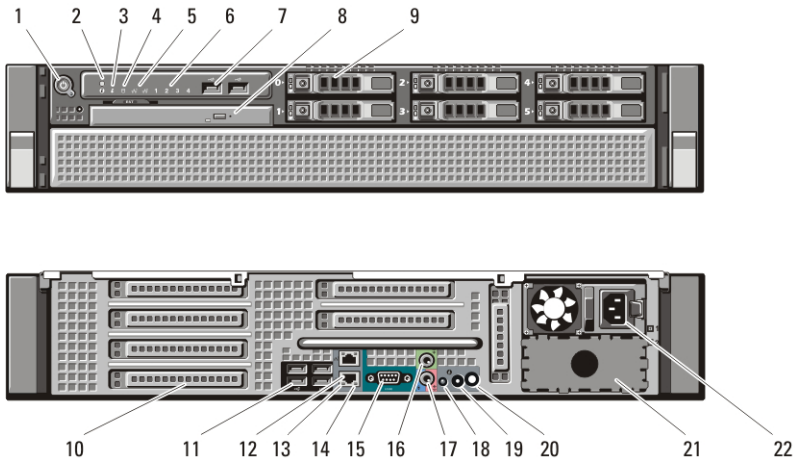


Figure 1. Front And Back View

- | | |
|--------------------------------------|-----------------------------------|
| 1. power button, power light | 11. USB 2.0 connectors (4) |
| 2. system identification button | 12. network adapter connector (2) |
| 3. system identification light | 13. network link integrity light |
| 4. drive activity light | 14. network activity light |
| 5. network link integrity lights (2) | 15. serial connector |
| 6. diagnostic lights (4) | 16. line-out connector |
| 7. USB 2.0 connectors (2) | 17. line-in/microphone connector |
| 8. CD/DVD drive | 18. system identification light |
| 9. hard drive bays (6) | 19. system identification button |
| 10. expansion card slots | |





0TV98TA00

Regulatory Model: E15S
Regulatory Type: E15S001
2011 - 04

- 20. remote system identification light connector
- 21. second power supply bay (optional)
- 22. power connector

Quick Setup

 **WARNING:** Before you begin any of the procedures in this section, read the safety information that shipped with your computer. For additional best practices information, see www.dell.com/regulatory_compliance.

 **NOTE:** Some devices may not be included if you did not order them.

1. Install the rails and the computer in the rack. See your rack installation documentation for safety instructions and instructions on installing your computer in a rack.



Figure 2. Rack Installation

 **WARNING: Additional Instructions for Rack-Mounted Systems:**

- Your rack kit has been approved only for the rack cabinet provided. It is your responsibility to ensure that installation of the equipment into any other rack complies with all applicable standards. Dell disclaims all liability and warranties with respect to combinations of equipment with any other rack.
- Before installing your equipment in a rack, install all front and side stabilizers. Failure to install stabilizers can allow the rack to tip over.
- Always load from the bottom up, and load the heaviest items first.
- Do not overload the AC power supply branch circuit that provides power to the rack.
- Do not stand or step on any components in the rack.



The system may have more than one power supply cable. To reduce the risk of electrical shock, a trained service technician may need to disconnect all power supply cables before servicing the system.

2. Connect the network cable(s) (optional).

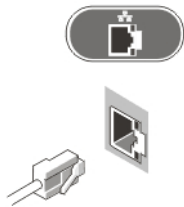


Figure 3. Network Connection

3. Connect the keyboard or mouse (optional).

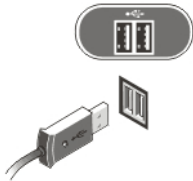


Figure 4. Keyboard and Mouse Connection

4. Connect the monitor cable (optional).

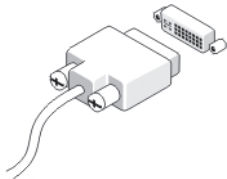


Figure 5. Monitor Connection

5. Connect the power cable(s).



Figure 6. Power Connection

6. Bend the power cable into a loop and secure it to the power supply handle using the strap.

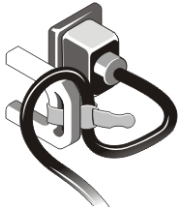


Figure 7. Securing the Power Cable

7. Press the power buttons on the monitor (optional) and the computer.



Figure 8. Turning On Power

8. Install the bezel (optional).

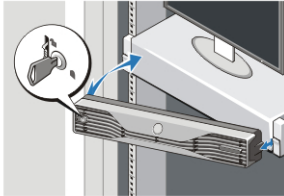



Figure 9. Bezel Install

Specifications

 **NOTE:** The following specifications are only those required by law to ship with your computer. For a complete and current listing of the specifications for your computer, go to support.dell.com.

System Information

Chipset	Intel 5520 chipset
---------	--------------------

Processor

Processor	Intel Xeon 5600 series
-----------	------------------------

Video

Video type	Discrete — PCI Express x16 graphics card; Up to two PCI Express X16 graphics cards, maximum of 450 W
------------	--

Memory

Memory module connector	twelve DIMM slots
Memory module capacity	1 GB, 2 GB, 4 GB, 8 GB, and 16 GB
Type	1066 Mhz or 1333 MHz DDR3, ECC only
Minimum memory	2 GB
Maximum memory	192 GB

Drives

Externally accessible:

Slimline SATA optical bays	one
2.5 inch drive bays	five SATA drives with onboard Intel controller, or six SAS drives with SAS/PERC 6iR cards

Internally accessible

none

Control Lights And Diagnostic Lights

Power button light:	off — system is off or unplugged. solid blue light — computer is operating normally. blinking blue light — computer is in stand by. solid amber light — the computer does not start, indicating a problem with the system board or power supply. blinking amber light — indicates a problem has occurred with the system board.
---------------------	---

Control Lights And Diagnostic Lights


System ID button and light	blue light — flashes (front and back of chassis) when the button is pressed. Press the button again to turn it off.
Drive activity light	blue light — blinking blue light indicates that the computer is reading data from, or writing data to the hard drive.
Network link integrity lights (front):	blue light — A good connection exists between the network and the computer. off (no light) — The computer is not detecting a physical connection to the network.
Network link integrity lights (rear):	green — A good connection at 10 Mbps exists between the network and the computer orange — A good connection at 100 Mbps exists between the network and the computer. amber — A good connection at 1000 Mbps exists between the network and the computer.
Network activity lights	amber — flashes when there is network activity on the connection.
Diagnostic lights:	off — computer is off or has completed POST. amber/blinking — see the service manual for specific diagnostic codes.

Power

Coin-cell battery	3 V CR2032 lithium coin cell
Voltage	100 V to 240 V, 12.00 A to 6.00 A, 50 Hz to 60 Hz
Wattage	1023 W on 100 VAC to 120 VAC, 1100 W on 200 VAC to 240 VAC

Power

Maximum heat dissipation	4774 BTU/hr
--------------------------	-------------

 **NOTE:** Heat dissipation is calculated by using the power supply wattage rating.

Physical

Height	86.30 mm (3.40 inches)
Width	440.60 mm (17.35 inches)
Depth	792.70 mm (31.21 inches) with front bezel 753.60 mm (29.67 inches) without front bezel
Weight (minimum):	23.52 kg (51.85 lb) (without bezel) 23.91 kg (52.71 lb) (with bezel)

Environmental

Temperature:

Operating	10 °C to 35 °C (50 °F to 95 °F)
-----------	---------------------------------

Storage	−40 °C to 65 °C (−40 °F to 149 °F)
---------	------------------------------------

Relative humidity	20 % to 80 % (noncondensing)
-------------------	------------------------------

Altitude:

Operating	−15.2 m to 3048 m (−50 ft to 10,000 ft)
-----------	---

Storage	−15.2 m to 10,668 m (−50 ft to 35,000 ft)
---------	---

Airborne contaminant level	G1 or lower as defined by ISA-S71.04–1985
----------------------------	---

Finding More Information and Resources

See the safety and regulatory documents that shipped with your computer and the regulatory compliance website at www.dell.com/regulatory_compliance for more information on:

- Safety best practices
- Regulatory certification
- Ergonomics

See www.dell.com for additional information on:

- Warranty
- Terms and Conditions (U.S. only)
- End User License Agreement

Information in this publication is subject to change without notice.

© 2011 Dell Inc. All rights reserved.

Reproduction of these materials in any manner whatsoever without the written permission of Dell Inc. is strictly forbidden.

Trademarks used in this text: Dell™, the DELL logo, Dell Precision™, Precision ON™, ExpressCharge™, Latitude™, Latitude ON™, OptiPlex™, Vostro™, and Wi-Fi Catcher™ are trademarks of Dell Inc. Intel®, Pentium®, Xeon®, Core™, Atom™, Centrino®, and Celeron® are registered trademarks or trademarks of Intel Corporation in the U.S. and other countries. AMD® is a registered trademark and AMD Opteron™, AMD Phenom™, AMD Sempron™, AMD Athlon™, ATI Radeon™, and ATI FirePro™ are trademarks of Advanced Micro Devices, Inc. Microsoft®, Windows®, MS-DOS®, Windows Vista®, the Windows Vista start button, and Office Outlook® are either trademarks or registered trademarks of Microsoft Corporation in the United States and/or other countries. Blu-ray Disc™ is a trademark owned by the Blu-ray Disc Association (BDA) and licensed for use on discs and players. The Bluetooth® word mark is a registered trademark and owned by the Bluetooth® SIG, Inc. and any use of such mark by Dell Inc. is under license. Wi-Fi® is a registered trademark of Wireless Ethernet Compatibility Alliance, Inc.

Other trademarks and trade names may be used in this publication to refer to either the entities claiming the marks and names or their products, Dell Inc. disclaims any proprietary interest in trademarks and trade names other than its own.